



# Soft Touch Furniture



[softtouchfurniture.com](https://softtouchfurniture.com)

# Who Are We?

Location: 1560 S State St, Girard, OH 44420

45 Years in Business!

We are family owned and operated!




- We are a family owned & operated business located in Girard, Ohio.
- Our team has the ability to complete your projects from start to finish. This includes field measurements, CAD design, digital renderings, manufacturing, delivery and installation.
- We make ourselves available to you for easy communication. We pride ourselves on our commitment to quality and being easily accessible to our customers.

# Services We Offer

- Booth and Banquette Seating
- Upholstered + Wood Chairs
- Commercial Reupholstering
- Installation + Delivery
- Tabletops and Bases
- Waste Receptacles
- Custom Millwork
- Renderings + Sign Off Approvals

# Green Initiatives

- Soft Touch Furniture uses only environmentally friendly finishes on our wood products with no VOC's
- Soft Touch Furniture seeks to limit the amount of packaging we use by delivering our product in our own trucks with reusable materials and recycling them at the end of their useful life
- Soft Touch Furniture will only purchase FSC  certified lumber. Choosing FSC Certified Lumber means it comes from sustainably managed forests and helps to protect old growth forests. Our goal is to protect natural resources by promoting environmentally sustainable, socially beneficial, and economically viable management of the world's forests
- Soft Touch Furniture operates in an environmentally and socially responsible manner and we insure similar standards from our vendor partners.
- Excess polyurethane foam is recycled by processor for carpet underlayment
- Sinuous springs used for seats and backs are made from recycled steel

# Sofa Booths



**Naples Lounge  
Sectional**



**Winchester**



**Jersey Chair**

# Hanging Backs



**Charleston**



**Bigham**



**Wildflower**



# Wood Booths



**Moby**



**Maine**



**Midwood Smoke House**

# Tufted Booths



**Preston**



**Anderson**



**Coventry**



# Channeled Backs



**Adams**



**Silver Half-Circle**



**Sinatra Half-Circle**

# Metal Legs



**Rochester Bar Height**



**Dakota**

# Benches & Ottomans



**Vineland**

- Square ottoman
- Fully upholstered
- Square wood style leg



**Washington**

- Waiting bench
- Padded removable seat
- Wood seat support
- Enclosed kick base

# Specialty Booths



## Virgin Atlantic

- Ball sofa
- Custom circular booth
- Individual upholstered foam balls



## O'Hare

- Quartz tops on swivels
- Chrome armrests
- Electrical outlets
- Open base with chrome legs

# Upholstered Seating



**Sylvester**



**Manhattan**



# Wood Chairs



**Ravenna Side Chair  
(High Back)**



**Ravenna Armchair  
(Low Back)**



# Classic Tabletops



## Aluminum Fluted Edge w/ Laminate Top

- Durable and stain-resistant wood grain, solid and patterned laminates



## Solid Mixed Wood Species Tabletop

- Tabletops, community and meeting tabletops to provide integrated technology options such as electrical data and USB outlets

# Classic Tabletops



## Self Edge Tabletop

- Durable and stain-resistant wood grain, solid and patterned laminates



## Wood Edge Tabletop

- Tabletops, community and meeting tabletops to provide integrated technology options such as electrical data and USB outlets

# Specialty Tabletops



- Durable and stain-resistant wood grain, solid and patterned laminates



- Tabletops, community and meeting tabletops to provide integrated technology options such as electrical data and USB outlets

# Base Options



**Cantilever**



**Round**



**Bolt-Down**



**X-Style**



**End Base**

# Waste Receptacles



- Swing door with permanently routed black or white filled letters
- Continuous piano hinge
- Door can open an optional left or right
- Furniture must integrate seamlessly into today's high-tech lifestyle. Whether you are looking for USB ports and electrical outlets, specialty lighting, or some other feature in your furniture, our expert designers can create exactly what you need.
- Chrome leveling guides
- Tray shelf on top of unit



# Installations



**The Black Whale**



**Orlando Embassy Suites**



# Installations



**Bad Daddys**



**Hyatt**

# Installations



**DoubleTree Hotel**



**Mi Vida**



# Installations



**Butler Country Club**



**Cafe 422**

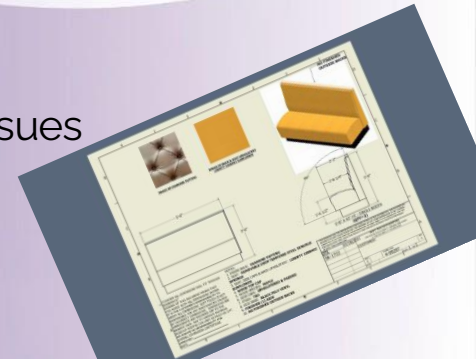


Soft Touch offers services that will smoothly complete your project without construction and delivery issues.



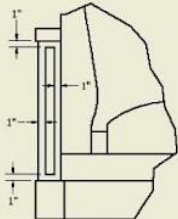
- ⌘ Pre-Construction shop drawings for approval from our engineering department, no surprises upon delivery
- ⌘ Delivery via Soft Touch's own trucks and team members dedicated to your project
- ⌘ Soft Touch technicians offer white glove installation and direct communication with our on-site personnel

Soft Touch will assist your firm to correct any on-site issues until the project is completed.

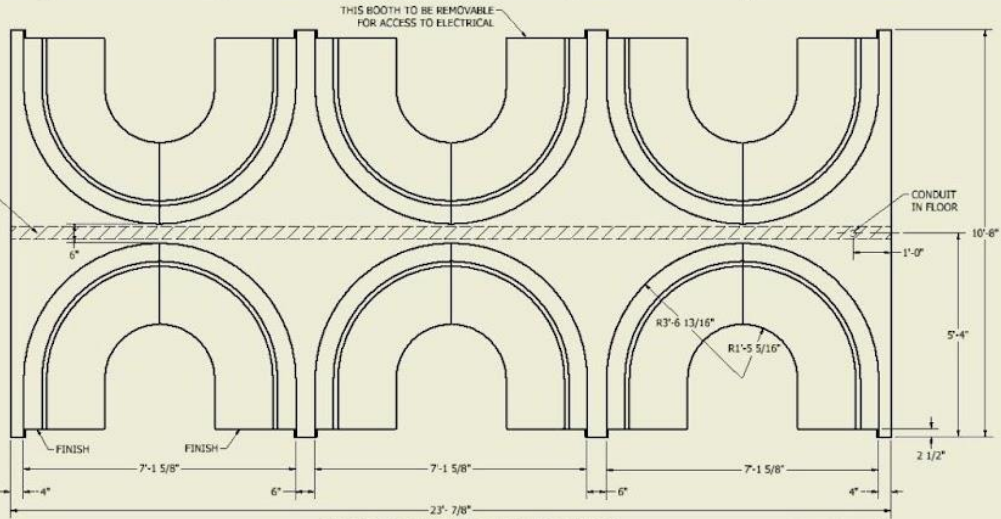


# Shop Drawings

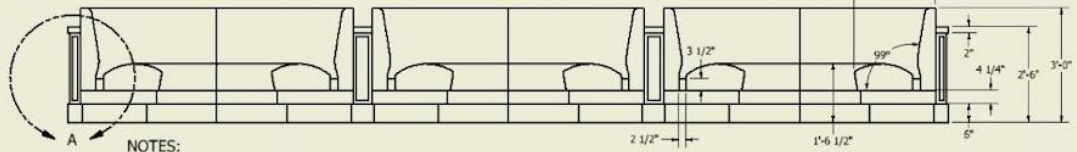
ALLOW ACCESS FOR WIRING TO LIGHTS DOWN THE MIDDLE OF THE LENGTH OF THE ENTIRE BANQUETTE



**DETAIL A**  
TYP. (6) PLACES



SEE SHEET 5 FOR ISOMETRIC VIEW



- NOTES:
- INSIDE BACK: SMOOTH. **UPHOLSTERY TO ROLL OVER BACK WHERE SHOWN ABOVE DECKING.**
  - REMOVABLE SEAT WITH TEMPERED STEEL SINUOUS SPRINGS.
  - CRUMB WIPE & WALLS: WOOD.
  - WOOD SPECIES: OAK.
  - STAIN COLOR: TBD.
  - DECKING & WALL BASE BOARDS: SOLID SURFACE CORIAN DEEP NOCTURN.
  - FABRIC WRAPPED SIDES.
  - EACH BOOTH FINISHED (2) SIDES.
  - NO FINISHED OUTSIDE BACKS.
  - BACK, SEAT & SEAT SUPPORT UPHOLSTERY: JUSTIN DAVID MANILOW LOLITA..
  - BOOTH KICK BASE: BLACK POLY VINYL.
  - EACH BOOTH BUILT IN (2) SECTIONS.

**U-SHAPED BOOTHS-SCOPE 02**  
(QTY. = 1)

"CONFIRM ALL DIMENSIONS WILL FIT THROUGH DOORWAYS!"  
SIGNING OF THIS DOCUMENT MEANS THAT YOU AGREE WITH ALL DIMENSIONS SHOWN. IT IS THE CUSTOMER'S RESPONSIBILITY TO VERIFY ALL DIMENSIONS. SOFT TOUCH IS NOT RESPONSIBLE FOR ANY INACCURACIES CAUSED BY INCORRECT DIMENSIONS. DIMENSIONS ARE APPROXIMATE AND ROUNDED OFF TO THE NEAREST INCH. DUE TO VARIOUS MATERIAL BUILD-UP WIDTHS CAN VARY AS MUCH AS 3/4". WE ASSUME NO RESPONSIBILITY FOR OVERALL DIMENSION LIMITATIONS.  
APPROVED: \_\_\_\_\_  
DATE: \_\_\_\_\_

THIS DRAWING AND THE INFORMATION CONTAINED THEREIN IS THE CONFIDENTIAL AND PROPRIETARY PROPERTY OF SOFT TOUCH FURNITURE. THE DRAWING IS NOT TO BE REPRODUCED IN ANY MANNER, SUBMITTED TO OUTSIDE PARTIES FOR EXAMINATION, OR USED DIRECTLY OR INDIRECTLY FOR THE PURPOSES OTHER THAN THOSE FOR WHICH IT WAS FURNISHED WITHOUT WRITTEN PERMISSION OF SOFT TOUCH FURNITURE.	
DRAWN BY: <b>SK-1743</b>	DATE: 12/08/2021
<b>SOFT TOUCH FURNITURE</b> 1560 SOUTH STATE STREET   GAREARD, OHIO 44430 P: 330.545.4204   F: 330.366.0065	
CUSTOMER:	
SIZE: C	FOUNDER-JOB#: <b>48-99610</b>
SCALE:	REV: C
SHEET 4 OF 15	



# Who buys Soft Touch Products?



THE PLAZA  
NEW YORK

FIREBIRDS  
WOOD FIRED GRILL



Fleming's  
PRIME STEAKHOUSE & WINE BAR



Panera  
BREAD

atlanta  
BREAD

VIVA  
CHICKEN

SILVER Diner

WILDFLOWER™  
EAT. SIP. ENJOY.

O'Charley's




DOUBLETREE  
by Hilton™

Rosa Mexicano



# Organizations

- Ohio Chamber of Commerce
- Rotary International
- National Restaurant Association
- Forest Stewardship Council 
- Better Business Bureau
- Ohio Restaurant Association
- NEWH - Network of Executive Women in Hospitality
- National Upholstery Association



# We Manufacture in the USA

Soft Touch Furniture

=

American Manufacturing at its  
Finest

We also support other "Made in the USA" companies  
for outsourced parts and services

# Come and Visit Us!

Want to come in person?

We can personally bring you from a major airport to tour our facility in Girard, Ohio.

Come and view true manufacturing at its peak.

Visit us virtually on our social media pages  
or on our website:



330-545-4204

T- 877-747-7638

[softtouchfurniture.com](https://www.softtouchfurniture.com)



Website QR Code